

IQ^F Conveyors

Ferrous in Foil Metal Detection



Versatile, proven ferrous in foil metal detection systems for the food and packaging industries

Loma IQ² Search Heads

Loma IQ² Conveyors

Loma IQ^F Conveyors

Loma IQ² PipeLines

Loma IQ² FreeFalls

Loma IQ² Pharmaceutical

Summary

Our sales and design engineers work with you to provide a metal detector system that is suitable to your individual application requirements.

The metal detector range is the result of over 35 years of expertise in the food processing and packaging industry. Careful design has resulted in a modular product for ease of maintenance and minimum parts stocking requirement.

Loma's metal detector systems optimise performance of the Loma IQ^F metal detector head. With a bright display easily read under all lighting conditions, the units ensure a level of reliability and ease of set up which is the best in the industry.

An essential part of any metal detection system is an efficient reject device. Our sales and design engineers will ensure that the most effective device is selected for your individual application.

Loma produce a wide range of robust, reliable and user friendly models to meet industry needs, whether for packaged, bulk-fed or pumped product.

Loma delivers better, consistent quality to your product and plays a vital role in protecting your brand.



Benefits at a glance:

- **Versatile** Range of apertures to suite a wide range of product sizes
- **Easy to use** Automatic product learn ensures maximum sensitivity without adjustment
- **Sensitive** VLF high power coil drive eliminates interference and maximises sensitivity
- **Flexible** Multiple product memories for rapid product change over and data storage
- **Reliable** Heavy duty drives and conveyor parts for the harshest of environments

Benefits of Metal Detection

Metal Detection has been used in the food processing and packaging industry for over 50 years so the technology is well tried and tested.

Metal forms a significant percentage of foreign bodies that can be considered dangerous. Contamination can arise for various reasons, for example metal can be present in the incoming raw material, from broken parts of plant machinery or even from the act of sabotage.

Analysis of the risks associated with the production process (such as HACCP within the food industry) should lead to an indication of the best location for metal detection inspection. A significant trend in recent years has been to install metal detection equipment at various stages in the production process as well as at the end of the line. The benefit being that contamination can be identified earlier and removed, with less value added to the product and also ensures that damage to expensive plant equipment is prevented.

Metal detectors rely on the conductive and magnetic qualities of metal in order for them to be detected. Where these are present in large amounts then detection is good, such as with magnetic steel, where they are not, such as with non-magnetic stainless steel, then detection is less good. Some conductive products (that contain salt and water) like cheese or meats affect the performance of metal detectors adversely, as well as some packaging like metallised film or foil. If the conductive product is frozen (below -18°C/0.4°F) then the adverse effects from the conductive products are largely eliminated.

A metal detector reject system has to be efficient and designed for the application to reliably reject the contaminated product.

Metal detection plays a vital role in protecting the brand and consumer and is key to conforming to product safety legislation.

Finally, remember first pre and after sales support is key to success. Training at the time of installation, spare parts availability, regional support, cross trained technicians and help lines must be considered as part of the purchase.

Technical Specification

Upgradeable metal detector controls.

High power VLF coil drive

PVS to aid HACCP compliance.

Various communication options to suit plant integration protocols.

High field strength to eliminate external interference and deliver the ultimate in noise free detection.

32-bit digital signal processing for enhanced contaminant detection.

Standard apertures on rapid delivery.

Aperture heights

134mm 184mm

Aperture Widths

370mm 510mm

About Spectrum Inspection Systems

Spectrum Inspection Systems is a world class manufacturer of inspection systems for the Loma and Cintex brands, with installations in over 60 countries and in most of the world's largest food and packaging companies.

Spectrum Inspection Systems holds ISO 9001 certification and has earned a reputation for the consistent quality and advanced technology of its products, the results of a continuous and far-reaching research and development program.

Short lead times, modular design together with our passion for customer service, allow you to:

1. Maximize your production up-time
2. Maintain your self-sufficiency
3. Help your customers comply with and exceed consumer and government demands

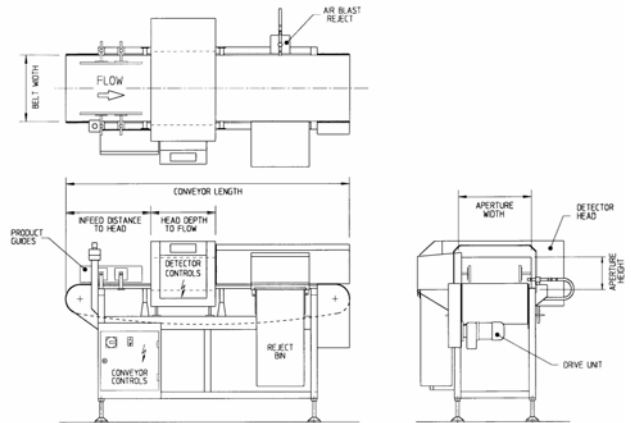


All Spectrum systems are manufactured to the exacting standards of ISO9001 and supported by a world-wide network of sales and service operations

Spectrum reserves the right to improve or change specification without prior notice

Finish:	304 stainless steel with bead blast finish	
Standard Line Height:	Feet: 750mm to 1000mm (50mm steps)	Wheels: 850mm to 1100mm (50mm steps)
System Lengths:	Variable to suit application	
Belt Widths:	300mm	400mm
Maximum Weights:	Flat PU Belt	30kg (66lb) on the belt
	Modular Belt	60kg (132lb) on the belt
Supply Voltages:	220/230V 1ph N+E 380/415V 3ph N+E	
Air Supply:	5 to 8 bar	
Reject Types:	Stop on detect	<60kg (132lb)
	Air blast	<1kg (2.2lb)
	Pusher	<10kg (22lb)
	Carriage retract band	<5kg (11lb)
Environmental Protection:	IP 65 (minimum)	
Belt Type:	Flat (food quality) belt or Modular Belt	
Options:	Remote control box Beacon stanchion Reject confirm LomaNet Serial link PVS Beacon	Keyboard cover Bin full Ethernet Remote reports

Typical System Drawing



UK Loma - Cintex Southwood, Farnborough Hampshire, GU14 0NY England tel +44 1252 893300 fax +44 1252 513322 e-mail sales@loma-cintex.com	USA Loma Systems 283 East Lies Road Carol Stream, Illinois 60188 USA tel +1 800 USA LOMA tel +1 630 588 0900 fax +1 630 588 1394 e-mail sales@loma.com	Canada Loma Systems Canada 333 Wycroft Road Oakville, Ontario, Canada tel +1 800 387 7987 tel +1 905 842 4581 fax +1 905 842 3460 e-mail: lomacanada@loma.com	China Spectris China Ltd Unit 101 XinAn Plaza Building 13 No 99, Tianzhou Road Shanghai 200233 PR China tel +86 21 611 33688 fax +86 21 611 33788 e-mail: stevenfang@spectris.com.cn	France Loma - Cintex 120 rue Jean Jaurès 92300 Levallois Perret France tel +33 1 55 69 57 78 fax +33 1 55 17 43 31 e-mail: info@loma-cintex.com	Germany Loma - Cintex Vahrenwalder Straße 269A 30179 Hannover, Germany tel +49 511 9666 811 fax +49 511 9666 812 e-mail: info@loma-cintex.com	The Netherlands Loma - Cintex Panovenweg 22 5708 HR Helmond, Netherlands tel +31 492 573 573 fax +31 492 573 570 e-mail: info@loma-cintex.com	Czech Republic Loma - Cintex U Lomy 1069, 334 41 Dobruška tel +420 377 183811 fax +420 377 183820 e-mail: info@loma-cintex.com
---	---	---	--	--	--	--	--